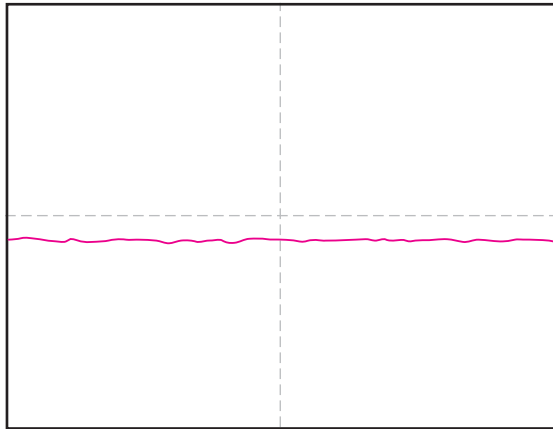
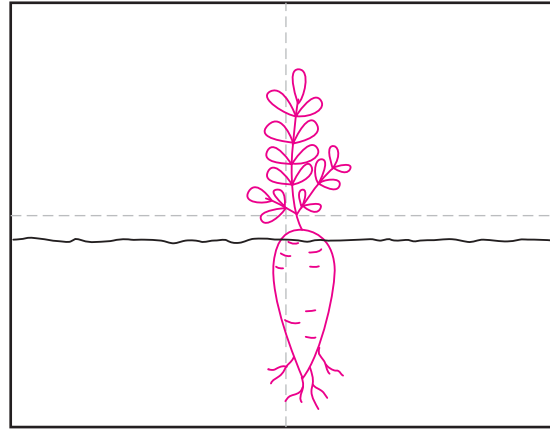


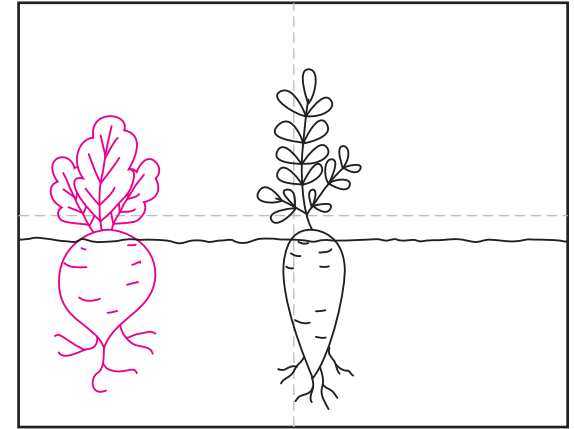
How to Draw Vegetables



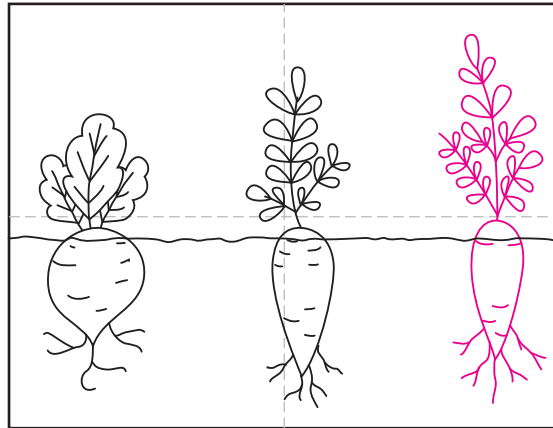
1. Draw the ground line.



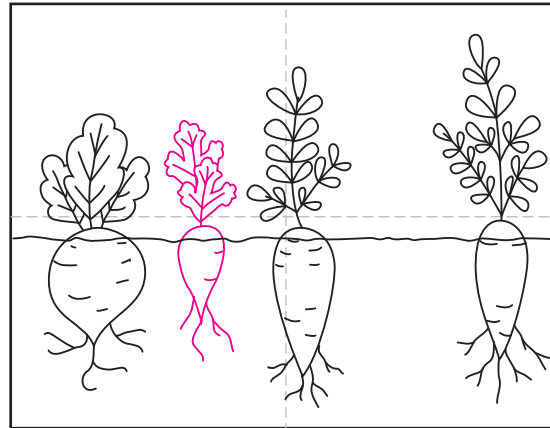
2. Draw a turnip as shown in the middle.



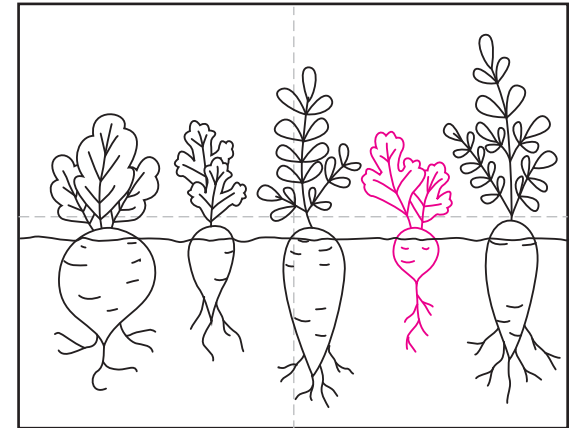
3. Add a beet shape way to the left.



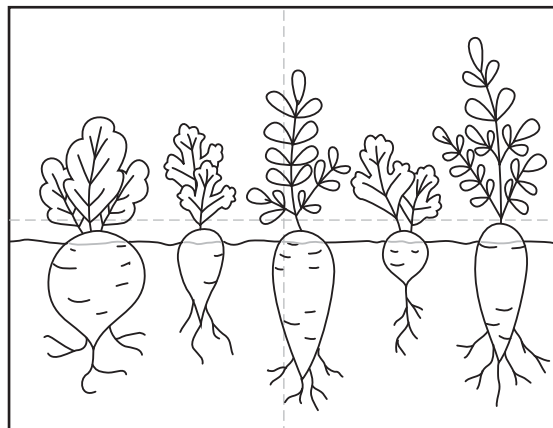
4. Draw a carrot shape way to the right.



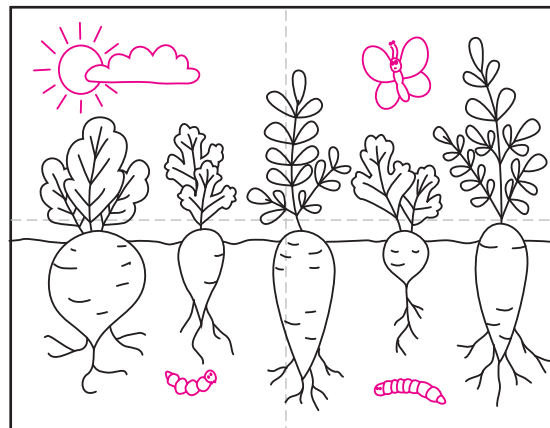
5. Add a smaller carrot centered on the left.



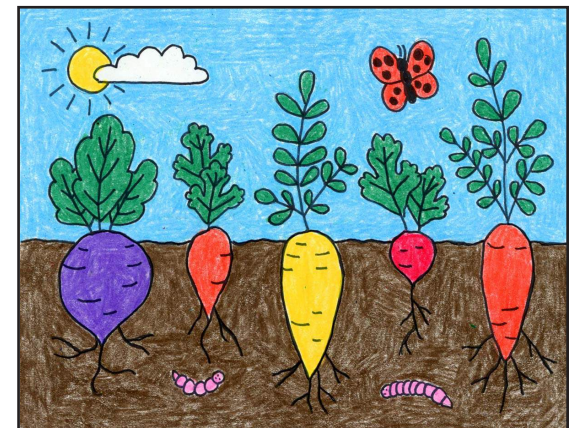
6. Add a radish centered on the right.



7. Erase all the ground lines inside each.



8. Add worms, butterfly and a sunny day.



9. Trace with a marker and color.

